

BRUCE

怕跳针/怕断线 就用 R5000

No Break No Skip Use R5000

防跳针技术
Anti-jump needle technology

防断线技术
Anti-break thread technology

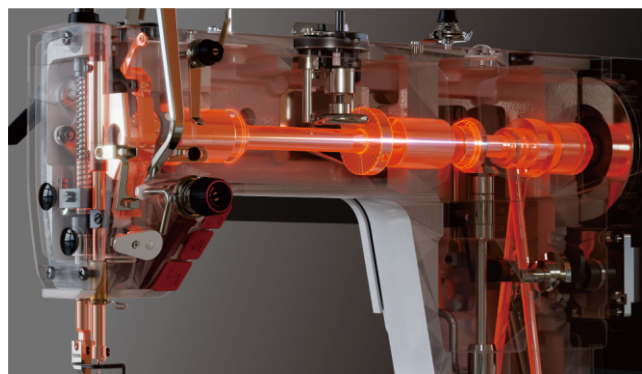




R5000 不跳针不断线

集成新一代防跳针与防断线两大技术模块
实现缝纫稳定不跳针不断线

Integrated with two new technological modules for skip-stitch prevention and thread breakage prevention, this system ensures stable sewing without skipped stitches and thread breaks.



防跳针技术:

Anti-jump needle technology

针梭协同: 适配不同针号, 线环形状稳定性**提升 90%**

针齿协同: 适配不同面料, 机针晃动幅度**降低 35%**

Needle-Shuttle Coordination: Compatible with different needle sizes, improving loop shape stability by 90%

Needle-Tooth Coordination: Adaptable to various fabrics, reducing needle shaking amplitude by 35%

防断线技术:

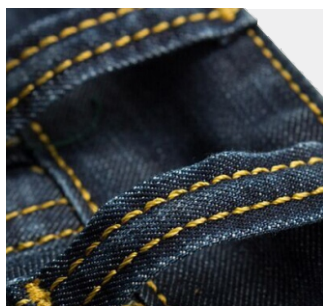
Anti-break thread technology

搭载稳线同步技术, 挑线、勾线及送料机构精准配合, 实现**低张力稳定缝纫**

创新线道 0 阻技术, 线道运行**阻力降低 25%**

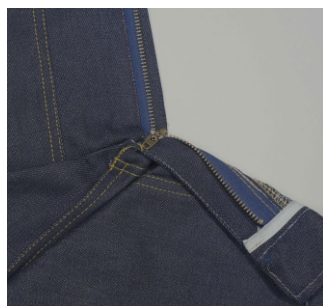
Equipped with stable thread synchronization technology, the take-up, hook, and feeding mechanisms work in precise coordination to achieve low-tension stable sewing.

Innovative Zero-Resistance Thread Path technology reduces thread path resistance by 25%.



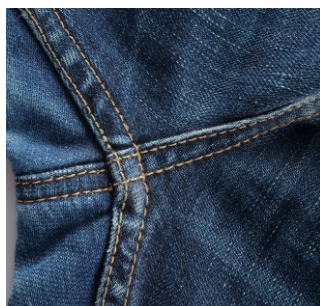
钉裤袂

Sew loops on trousers



上拉链

Sew a zipper



缝裆部

Sew the crotch



缝口袋

Sew pockets

技术参数

						薄料 A	中厚料 M	厚料 H		NW/GW (kg)
			(mm)	(mm)	(S.p.m)				(mm)	
R5000-D	DBx1 11-18#	2	5	5-13	5000	√	√		695x550x295	37/43
R5000-D-7	DBx1 11-18#	2	7	5-13	3500	√	√		695x550x295	37/43
R5000-DH-7	DPx5 18-21#	2	7	5-13	3500			√	695x550x295	37/43